

COMPARE

CENTRE OF MEMBRANE PROTEINS AND RECEPTORS

COMPARE Newsletter : July 2016

Launch event

The Launch Event was a great success highlighting the fantastic research within COMPARE and the opportunities for collaboration. We are especially grateful to Anne Ridley and Steve Rees for their talks on team sciences and opportunities for interaction with the pharmaceutical industry, respectively. Steve Hill and Steve Watson will follow up with a visit to Steve Rees in AstraZeneca in August.

COMPARE will launch in August 2016. We will organise an official launch event in 2017 as part of the annual COMPARE Symposium.

Research grant applications

It has been agreed that all grants awarded to COMPARE scientists should count towards a target of £35m over the course of COMPARE. Please send details of all new grants to Gayle including title, PIs, co-PIs and amount.

Please provide Gayle Halford with details of all submitted grants that mention COMPARE along with a sentence summary of how the grant relates to COMPARE.

COMPARE grant call: Pump-priming

We invite applications for collaborative awards for up to £50,000 to provide pump-priming funds. Grants should be submitted on one page of A4 and highlight how the funding will pump-prime applications to other funding organisations. Applications can cover salary, running costs, access charges, equipment or software etc.

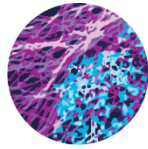
We encourage joint applications from members of COMPARE, especially between the two universities, and applications that focus on Project 1: clustering of membrane proteins. Applications can be submitted with non-COMPARE researchers. Only one application can be submitted as lead PI (there is no limit on the number of applications as co-investigator).

The closing date for the first round of awards is 1st September, 2016. Applications should be sent to Gayle Halford.

Grants will be assessed by a small committee and decisions ratified by the Management Board.

IN PARTNERSHIP:

The Universities of Birmingham and Nottingham



COMPARE

CENTRE OF MEMBRANE PROTEINS AND RECEPTORS

Logo competition

We need a logo for COMPARE: please submit suggestions to Gayle Halford by September 1st. The creator of the winning logo will receive a bottle of champagne.

Recruitment

We are currently holding interviews for the Project Manager. We will shortly advertise the COMPARE secretary, microscope and image analyst positions.

Dr Yi Sun, who was named as a fellow in the original application for COMPARE, has been awarded a research grant from the British Heart Foundation. We will use the funds that had been set aside to support Dr Sun in the above grant call.

Refurbishment

Plans for refurbishment of the COMPARE laboratories and office in Birmingham have been finalised and will shortly go out to tender with an anticipated completion date of January 2017. This will provide space for current microscopes, along with space for tissue culture and two further microscopes.

The office will include six work-stations, desks for microscope support and image analysis officers, a Board Table and Video Screen for Skype meetings.

These facilities will be available to all members of COMPARE.

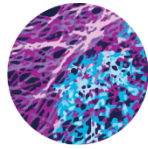
Microscopes

A lattice light-sheet microscope is currently being demonstrated in Birmingham. This enables rapid spatial and temporal measurements in real time at the level of resolution of a confocal: Please contact Malou Zuidsherwoude M.Zuidsherwoude@bham.ac.uk if you would like to further information. Malou will write a short summary of the lattice light sheet in a subsequent newsletter.

The Institute of Cardiovascular Sciences in Birmingham has been awarded a grant of £900k from the university for a two photon microscope and a second up-right intravital microscope that will go the intravital facility, alongside the COMPARE Laboratories. The two-photon microscope can be made available to PIs from Nottingham through a second licence agreement. Animals can be moved to Birmingham from Nottingham for the purpose of experimentation but not breeding

IN PARTNERSHIP:

The Universities of Birmingham and Nottingham



COMPARE

CENTRE OF MEMBRANE PROTEINS AND RECEPTORS

Steve Thomas and Steve Briddon will provide a full list of microscopes that are available through COMPARE in the next Newsletter. Please contact Steve T or Steve B for any microscope related issues including purchase of future microscopes.

Collaborative and infrastructure bids

Steve Hill and Steve Watson will lead a Collaborative Grant submission to the Wellcome Trust in the autumn on clustering of tyrosine kinase-linked and G protein-coupled receptors. Please contact Steve or Steve for further information.

We are horizon scanning BBSRC, MRC, Wolfson and other grant awarding bodies for infrastructure calls.

Please contact either Steve if you are considering submitting a grant that requires match funding.

Recent publications and grants

Please let Gayle know of major publications that mention COMPARE.

Team Science

Natalie Poulter will be in touch over the next few weeks to ask for information to create a database of research skills, expertise and current animal models in COMPARE. Natalie will also help you obtain an ORCID number if necessary. We will also be collecting a list of your current post-docs who will become part of the COMPARE mentorship programme.

Management Board

The following have agreed to join the management board:

- Steve Hill (Chair) and Steve Watson
- Iain Styles and Jeanette Woolard* (Deputy Directors)
- Project Manager
- Steve Thomas and Steve Briddon (Facilities)
- Natalie Poulter (Team Science)
- Rotating (UoB): Roy Bicknell, Carol Murphy, Rob Neely
- Rotating (UoN): Dave Bates, Peter Fischer, Ian Hall

Steve Watson and Steve Hill

IN PARTNERSHIP:

The Universities of Birmingham and Nottingham